

USER GUIDE

STAND MOUNTING

WHAT'S INCLUDED?



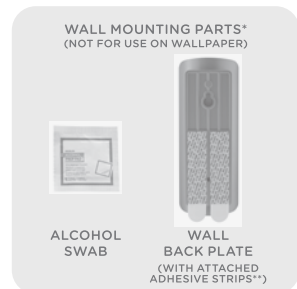
CLEANSING SPRITZ TOUCHLESS DISPENSER
*SHIPS WITH WHITE COVER & WALL BACK PLATE ATTACHED

SPRITZ-SAFE BATH TISSUE



4AA BATTERIES

OPTIONAL SATIN NICKEL COVER



WALL MOUNTING PARTS* (NOT FOR USE ON WALLPAPER)

ALCOHOL SWAB

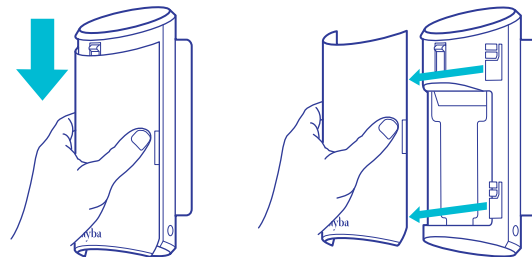
WALL BACK PLATE (WITH ATTACHED ADHESIVE STRIPS**)

*SEE REVERSE SIDE FOR WALL MOUNTING
**EXTRA ADHESIVE STRIPS & REMOVAL INSTRUCTIONS INCLUDED

1 INSTALL SPRITZ BOTTLE

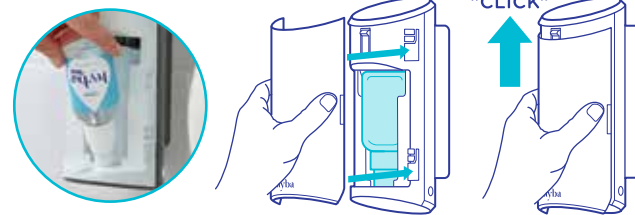
REMOVE FRONT COVER

GENTLY SHIFT COVER DOWN AND PULL AWAY FROM DISPENSER TO OPEN.



INSERT SPRITZ BOTTLE

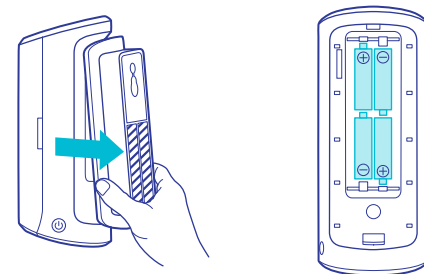
REMOVE ONLY CLEAR CAP FROM BOTTLE. TURN BOTTLE UPSIDE DOWN AND INSERT (NOZZLE FIRST) INTO DISPENSER PRESSING INTO PLACE. TO REPLACE THE FRONT COVER: ALIGN TABS, THEN SHIFT FRONT COVER UP UNTIL IT CLICKS.



2 INSTALL BATTERIES

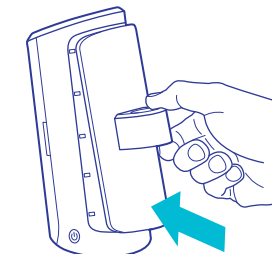
REMOVE BACK PLATE & INSERT BATTERIES

PULL WALL BACK PLATE AWAY FROM DISPENSER TO OPEN. INSERT 4AA BATTERIES, AS SHOWN.



ATTACH STAND BACK PLATE

REPLACE WALL BACK PLATE WITH STAND BACK PLATE. INSERT UPPER TAB OF BACK PLATE INTO SLOT AND PRESS INTO PLACE.

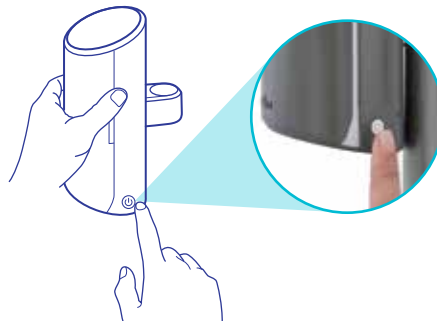


NOTE: STORE OR DISPOSE OF WALL BACK PLATE IF NOT INTENDING TO USE.

3 TEST HYBA™ TOUCHLESS DISPENSER

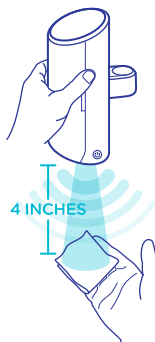
TURN DISPENSER ON/OFF

PRESS ON/OFF BUTTON TO TURN DISPENSER ON. PRODUCT WILL REMAIN ON UNTIL BUTTON IS PRESSED AGAIN.



PREPARE DISPENSER FOR USE

HOLD SPRITZ-SAFE BATH TISSUE BELOW DISPENSER WITHIN 4 INCHES OF SENSOR. IT MAY TAKE A FEW PUMPS UNTIL LIQUID DISPENSES, BUT DISPENSER WILL SPRAY REPEATEDLY THEREAFTER WHILE OBJECTS ARE WITHIN RANGE.

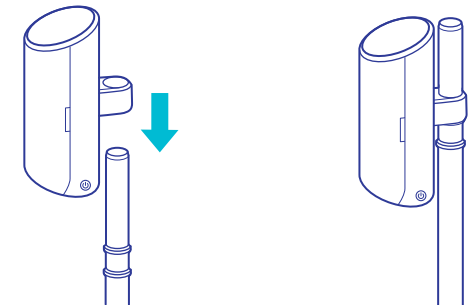


NOTE: TURN PRODUCT OFF BEFORE PROCEEDING TO STEP 4.

4 ASSEMBLE THE STAND

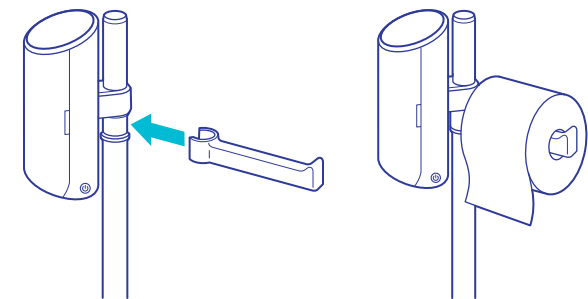
ATTACH DISPENSER TO STAND

TURN OFF DISPENSER. LINE UP MOUNT RING ON STAND BACK PLATE WITH STAND POLE AND LOWER INTO POSITION.



ATTACH TISSUE ROLL HOLDER (OPTIONAL)

PUSH THE TISSUE HOLDER INTO RECESSED SECTION ON STAND POLE TO HOLD YOUR SPRITZ-SAFE BATH TISSUE.



5 FAQs

HOW MUCH SPRITZ CAN I ADD TO THE TISSUE?

THAT'S TOTALLY UP TO YOU! WE SUGGEST STARTING OFF WITH A FEW SPRAYS TO SEE WHAT WORKS BEST FOR YOU AND ADDING MORE OR LESS TO CUSTOMIZE THE PERFECT AMOUNT FOR YOUR ROUTINE. WANT A WIDER SPRITZ? SIMPLY HOLD BATH TISSUE FURTHER AWAY.

IS THE CLEANSING SPRITZ SAFE?

WE DEVELOPED OUR CLEANSING SPRITZ TO BE BOTH SAFE AND HYGIENIC WHEN USED AS DIRECTED—SO YOU CAN GET A CONFIDENT CLEAN THAT LEAVES YOU FEELING FRESH WITH EVERY WIPE.

WHAT SHOULD I DO IF THE SPRITZ IS NOT DISPENSING?

FIRST, CHECK TO MAKE SURE THE DISPENSER IS ON. THEN, CHECK TO SEE IF BATTERIES ARE WORKING AND ARE INSTALLED CORRECTLY. IT MAY TAKE A FEW PRIMING PUMPS BEFORE THE LIQUID BEGINS DISPENSING. IF THE PROBLEM PERSISTS, JUST GIVE US A CALL AND WE'LL HELP.

DO I NEED TO WORRY ABOUT BATTERY LIFE?

WE'VE DESIGNED THE TOUCHLESS DISPENSER TO MINIMIZE BATTERY CONSUMPTION WHILE REMAINING ON. TO FURTHER CONSERVE BATTERY LIFE, YOU MAY TURN IT OFF BETWEEN USES OR DURING LONGER ABSENCES.

WE ANSWER EVEN MORE QUESTIONS ONLINE AT:
WWW.HYBACLEAN.COM
CONTACT US 7 DAYS A WEEK FROM 9AM-9PM EDT/EST
1-800-283-5547

PLEASE SEE REVERSE SIDE FOR WALL MOUNTING



USER GUIDE

WALL MOUNTING

WHAT'S INCLUDED?



CLEANSING SPRITZ TOUCHLESS DISPENSER *SHIPS WITH WHITE COVER & WALL BACK PLATE ATTACHED

SPRITZ-SAFE BATH TISSUE



4AA BATTERIES

OPTIONAL SATIN NICKEL COVER

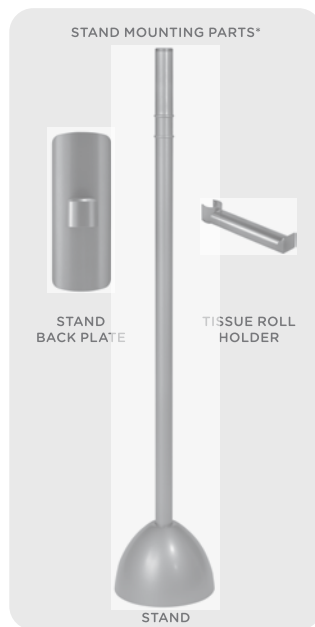


WALL MOUNTING PARTS (NOT FOR USE ON WALLPAPER)

ALCOHOL SWAB

WALL BACK PLATE (WITH ATTACHED ADHESIVE STRIPS**)

*SEE REVERSE SIDE FOR STAND MOUNTING **EXTRA ADHESIVE STRIPS & REMOVAL INSTRUCTIONS INCLUDED



STAND MOUNTING PARTS*

STAND BACK PLATE

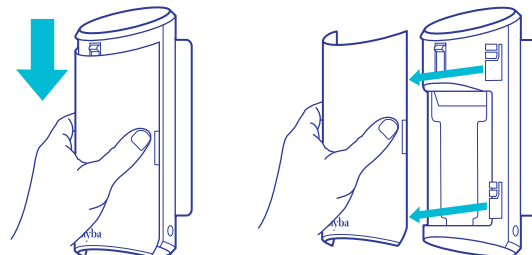
TISSUE ROLL HOLDER

STAND

1 INSTALL SPRITZ BOTTLE

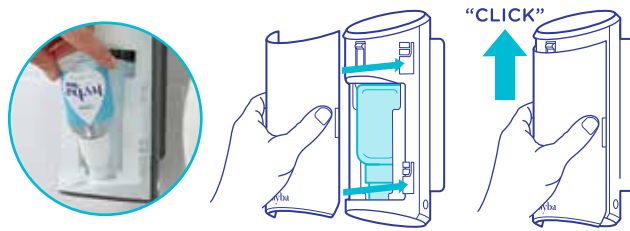
REMOVE FRONT COVER

GENTLY SHIFT COVER DOWN AND PULL AWAY FROM DISPENSER TO OPEN.



INSERT SPRITZ BOTTLE

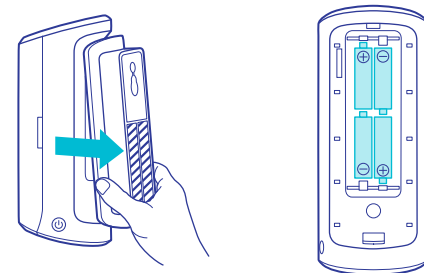
REMOVE ONLY CLEAR CAP FROM BOTTLE. TURN BOTTLE UPSIDE DOWN AND INSERT (NOZZLE FIRST) INTO DISPENSER PRESSING INTO PLACE. TO REPLACE THE FRONT COVER: ALIGN TABS, THEN SHIFT FRONT COVER UP UNTIL IT CLICKS.



2 INSTALL BATTERIES

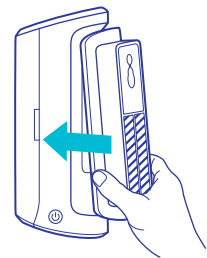
REMOVE BACK PLATE & INSERT BATTERIES

PULL WALL BACK PLATE AWAY FROM DISPENSER TO OPEN. INSERT 4AA BATTERIES, AS SHOWN.



REPLACE WALL BACK PLATE

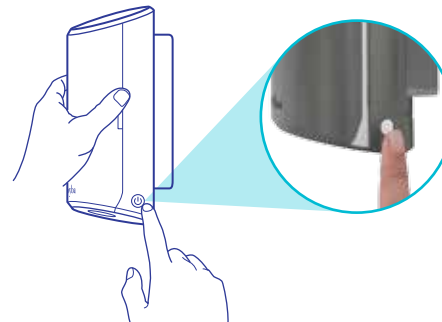
INSERT UPPER TAB OF BACK PLATE INTO SLOT AND PRESS INTO PLACE.



3 TEST HYBA™ TOUCHLESS DISPENSER

TURN DISPENSER ON/OFF

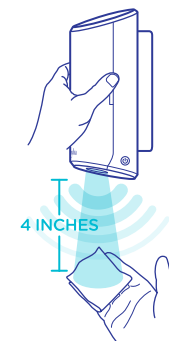
PRESS ON/OFF BUTTON TO TURN DISPENSER ON. PRODUCT WILL REMAIN ON UNTIL BUTTON IS PRESSED AGAIN.



PREPARE DISPENSER FOR USE

HOLD SPRITZ-SAFE BATH TISSUE BELOW DISPENSER WITHIN 4 INCHES OF SENSOR. IT MAY TAKE A FEW PUMPS UNTIL LIQUID DISPENSES, BUT DISPENSER WILL SPRAY REPEATEDLY THEREAFTER WHILE OBJECTS ARE WITHIN RANGE.

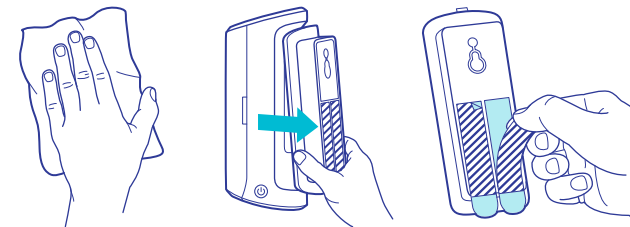
NOTE: TURN PRODUCT OFF BEFORE PROCEEDING TO STEP 4.



4 ATTACH TO WALL

USE PRE-ATTACHED WALL BACK PLATE

PREP WALL BY WIPING WITH INCLUDED ALCOHOL SWAB AND LET DRY. REMOVE WALL BACK PLATE FROM THE DISPENSER. PEEL OFF BROWN BACKING TO EXPOSE THE ADHESIVE STRIP.



FOR MORE PERMANENT MOUNTING, DISPENSER CAN BE SECURED USING A SCREW (NOT INCLUDED).

ATTACH BACK PLATE TO WALL

SELECT FLAT AREA ON WALL WITH NO OBJECTS IN SENSOR RANGE. PRESS TO WALL AND HOLD FIRMLY FOR 30 SECONDS. FOR MAX HOLDING STRENGTH, PLEASE WAIT 60 MINUTES BEFORE RE-ATTACHING DISPENSER TO WALL MOUNT.



DO NOT USE ON WALLPAPER OR ON VINYL SURFACES. DO NOT ATTACH TO VALUABLE OR IRREPLACEABLE ITEMS. PLEASE REFER TO INCLUDED INSTRUCTIONS FOR REMOVING ADHESIVE STRIPS FROM WALL.

5 FAQs

HOW MUCH SPRITZ CAN I ADD TO THE TISSUE?

THAT'S TOTALLY UP TO YOU! WE SUGGEST STARTING OFF WITH A FEW SPRAYS TO SEE WHAT WORKS BEST FOR YOU AND ADDING MORE OR LESS TO CUSTOMIZE THE PERFECT AMOUNT FOR YOUR ROUTINE. WANT A WIDER SPRITZ? SIMPLY HOLD BATH TISSUE FURTHER AWAY.

IS THE CLEANSING SPRITZ SAFE?

WE DEVELOPED OUR CLEANSING SPRITZ TO BE BOTH SAFE AND HYGIENIC WHEN USED AS DIRECTED—SO YOU CAN GET A CONFIDENT CLEAN THAT LEAVES YOU FEELING FRESH WITH EVERY WIPE.

WHAT SHOULD I DO IF THE SPRITZ IS NOT DISPENSING?

FIRST, CHECK TO MAKE SURE THE DISPENSER IS ON. THEN, CHECK TO SEE IF BATTERIES ARE WORKING AND ARE INSTALLED CORRECTLY. IT MAY TAKE A FEW PRIMING PUMPS BEFORE THE LIQUID BEGINS DISPENSING. IF THE PROBLEM PERSISTS, JUST GIVE US A CALL AND WE'LL HELP.

DO I NEED TO WORRY ABOUT BATTERY LIFE?

WE'VE DESIGNED THE TOUCHLESS DISPENSER TO MINIMIZE BATTERY CONSUMPTION WHILE REMAINING ON. TO FURTHER CONSERVE BATTERY LIFE, YOU MAY TURN IT OFF BETWEEN USES OR DURING LONGER ABSENCES.

WE ANSWER EVEN MORE QUESTIONS ONLINE AT: WWW.HYBACLEAN.COM CONTACT US 7 DAYS A WEEK FROM 9AM-9PM EDT/EST 1-800-283-5547

PLEASE SEE REVERSE SIDE FOR STAND MOUNTING

